



DOG MEAT FREE INDONESIA



DOG MEAT FREE INDONESIA

To protect animal welfare and public health and safety



The Dog Meat Trade in Indonesia: A Cruel and Dangerous Trade

Every year, millions of dogs are captured and stolen to be transported throughout Indonesia to supply the demand for dog meat.

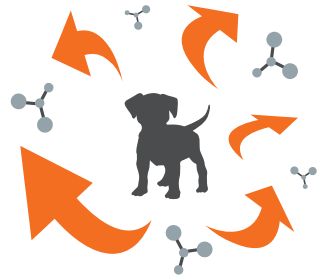
Many are stolen family pets and illegally trafficked dogs collected from the streets and rural communities.

A Risk to Human Health

The dog meat trade poses a grave health risk to all sectors of society, notably in the form of rabies transmission, given that it is the only known mass and unregulated movement of dogs from different cities, provinces and islands. The dog meat trade operates in breach of rabies control recommendations from leading human and animal health experts, including the **World Health Organization (WHO)**, **World Organisation for Animal Health (OIE)**, and the **Food and Agriculture Organization of the United Nations (FAO)**.

The WHO has explicitly highlighted the dog meat trade as a contributing factor to the spread of rabies in Indonesia – a deadly disease that has a devastating impact on human and animal health. Rabies positive dogs are being moved to supply highly-populated cities that are often dog meat eating “hot spots” throughout the nation, including those areas that have worked to secure “rabies-free” status, including the capital city of Jakarta.

The unsanitary conditions of slaughterhouses and the unknown health status of dogs slaughtered for consumption are of added and equal concern, with those involved in the dog meat trade – traders, slaughterers, vendors and consumers – at further risk of being exposed to rabies and other zoonotic diseases.



Unregulated movement of dogs spreads rabies



Rabies positive dogs are being moved to supply highly-populated cities that are often dog meat eating hot spots

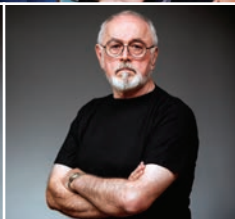
Growing Opposition to the Dog Meat Trade in Indonesia and Globally

Many countries and territories across Asia have already banned the dog meat trade and/or consumption of dogs, in recognition of the **inherent animal cruelty and risks to human health**. Such bans exist in the Philippines, Taiwan, Singapore, Hong Kong, Thailand and Malaysia, and demand for dog meat is declining throughout the region.

Opposition to the dog meat trade has become increasingly vocal within Indonesia, particularly amongst younger generations, due to the **exponential growth in pet ownership and associated concerns for animal welfare**. Concerns over the public health and safety risks associated with the production and consumption of dog meat are increasing for many as well, as is the **global political commitment and responsibility to safeguard** animals from cruelty.

Whilst only a minority of Indonesians – estimated at less than 7% – ever consume dog meat, and with only a tiny fraction of society reliant on the dog meat trade as a primary source of income, the dog meat trade threatens the health and safety of the whole nation and is responsible for the suffering of millions of dogs every year.

With Indonesia's pledge to eliminate rabies by 2020, urgent action is required by the government and all sectors of society.



With concerns being raised around the world by citizens, politicians, celebrities, veterinarians, medical practitioners and animal welfare experts, it is simply a matter of time before this cruel industry is relegated to the history books.



Animal Welfare

Immense suffering is caused to millions of dogs each year, through crude, brutal methods of capture, transport and slaughter:

Many dogs used to supply the trade are stolen family pets and illegally trafficked dogs collected from the streets and rural communities. Crammed tightly into cages and sacks, their mouths are bound shut so they can hardly breathe. They are taken on long journeys on bikes or in overcrowded trucks to supply markets, slaughterhouses and restaurants. Many die from suffocation, dehydration or heatstroke before reaching their final destination. For those who survive, they watch others being brutally killed in filthy slaughterhouses whilst they wait their turn. Their fear is unimaginable.

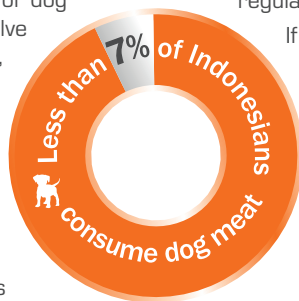


Why Regulation is Not a Solution

Apart from being out of step with the rest of the world's approach to animal welfare, claims that regulation of dog meat production would resolve the systematic cruelty involved, or alleviate all the risks posed to human health, are unsubstantiated.

The dog meat trade relies on criminality, and existing laws and regulations that pertain to the dog meat trade are already inadequately enforced and thus

ignored, a phenomenon that would likely continue to be prevalent despite new regulations.



If Indonesia were to impose stricter regulations, it would become the first country in the world to regulate the production of dogs for human consumption at a time when most nations with a dog meat trade are taking steps to end this practice.

Dogs Deserve Better

Dogs are **our most loyal companions**. As pets they bring us **joy** and **comfort**. They are cherished as **therapists** in schools, hospitals and in homes for the young and elderly. They **protect** us by serving in our police forces, rescue services and military.

As pet ownership rises in Indonesia, it is our duty to ensure that dogs are protected from cruelty, and are recognised and respected as the **companion animals** they are.



The Dog Meat-Free Indonesia Campaign



Jakarta Animal Aid Network (JAAN), Change For Animals Foundation (CFAF), Animal Friends Jogja (AFJ) and Humane Society International (HSI) created the “**Dog Meat-Free Indonesia**” campaign, based on a shared commitment to working collaboratively to tackle the dog meat trade in Indonesia.

Through **public awareness campaigning and political engagement**, our united goal is to secure public and political opposition towards the dog meat trade throughout Indonesia. With **proven experience and expertise** in delivering effective public awareness campaigns, and in working in collaboration with local and central governments to pass and implement laws and regulations to end cruel practices and strengthen animal protection legal provisions, we are well positioned to tackle Indonesia’s cruel and dangerous dog meat trade.

There is an ever-growing opposition to the dog meat trade in Indonesia and globally, and we are committed to **raising the profile of this issue** and to ensure the **strengthening and enforcement of laws** that will end a trade that causes unimaginable suffering to millions of dogs each year, and poses a grave risk to human health and safety.

A Collaborative and Solution-Based Approach

We are committed to working with **local communities**, **celebrities** and the **authorities** to raise awareness of the illegal dog meat trade and the risks it poses to both human and animal health, as well as the enormous amount of suffering the trade causes to millions of dogs every year.

We are committed to:

- Highlighting the human **health risks** associated with the trade in, and consumption of, dogs
- Encouraging a more **compassionate** attitude towards all dogs
- Promoting **responsible** pet ownership
- Providing **humane** and **sustainable** dog population management and rabies elimination solutions
- Supporting the government to ensure Indonesia fulfills its pledge to **eliminate rabies** by 2020
- Equipping local law enforcers with the **skills, resources** and **knowledge** to ensure adequate enforcement of existing laws and regulations.



Mass vaccination of dogs will help eliminate the fatal virus

Working Together

The collaborative “Dog Meat-Free Indonesia” campaign was founded by **Jakarta Animal Aid Network, Change For Animals Foundation, Animal Friends Jogja** and **Humane Society International**, in recognition that our impact is greatest when we work together. Find out more at www.dogmeatfreeindonesia.org and contact us at: info@dogmeatfreeindonesia.org

Jakarta Animal Aid Network (JAAN) was established in 2008 and is committed to raising awareness of animal cruelty issues and to promoting the compassionate treatment for all animals. **JAAN's** work is divided into two main categories: companion animal welfare, including animal rescue, promotion of responsible pet ownership and public awareness activities; and wildlife rescue activities and campaigns. (www.jakartaanimalaid.com)

Change For Animals Foundation (CFAF) is an organisation committed to promoting compassion towards all animals and ending animal suffering. **CFAF** works to support and inspire positive change for animals around the world in partnership with local animal protection groups and an international network of animal welfare specialists. (www.changeforanimals.org)

Humane Society International and its partner organisations together constitute one of the world's largest animal protection organisations. For more than 25 years, **HSI** has been working for the protection of all animals through the use of science, advocacy, education and hands-on programmes. Celebrating animals and confronting cruelty worldwide. (www.hsi.org)

Animal Friends Jogja (AFJ) is a non-profit organisation committed to improving the welfare and protection of all animals throughout Indonesia through humane education, the provision of veterinary care, advocacy and public awareness campaigns. For better compassion towards animals and nature, **AFJ** is committed to promoting grassroots activism and building networks with local organisations and communities. (www.animalfriendsjogja.org)



**HUMANE SOCIETY
INTERNATIONAL**



DOG MEAT FREE INDONESIA